



- g.GAMMAcap<sup>2</sup>
- g.GAMMAcap<sup>3</sup>



Consumables



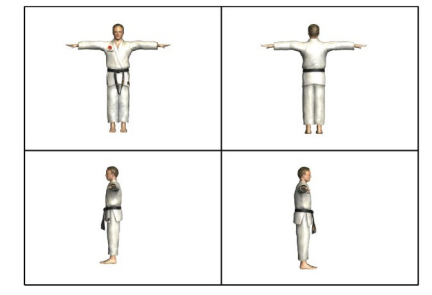
- Electrodes
- active
  - passive
  - dry



- Impedance tester
- Signal generator



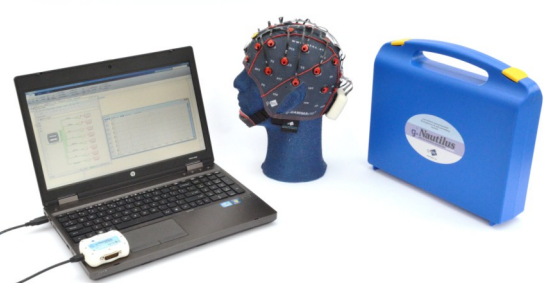
- VR-system
- g.AVATAR



- g.USBamp
- 16 channels
  - 32 channels
  - 48 channels
  - 64 channels



- g.HIamp
- 80 channels
  - 144 channels
  - 256 channels



- g.Nautilus
- active-gel
  - active-dry
  - 8 channels
  - 16 channels
  - 32 channels
  - 64 channels



- Eyetracker (screen-mounted)
- Eyetracker (head-mounted)



- Sensors
- GSR
  - Blood pressure
  - Respiration
  - Temperature
  - Pulse
  - Acceleration
  - More sensors

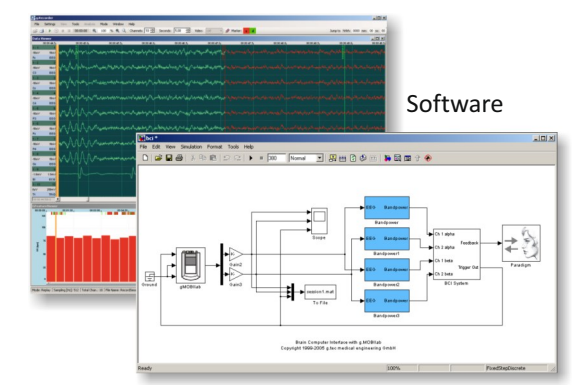
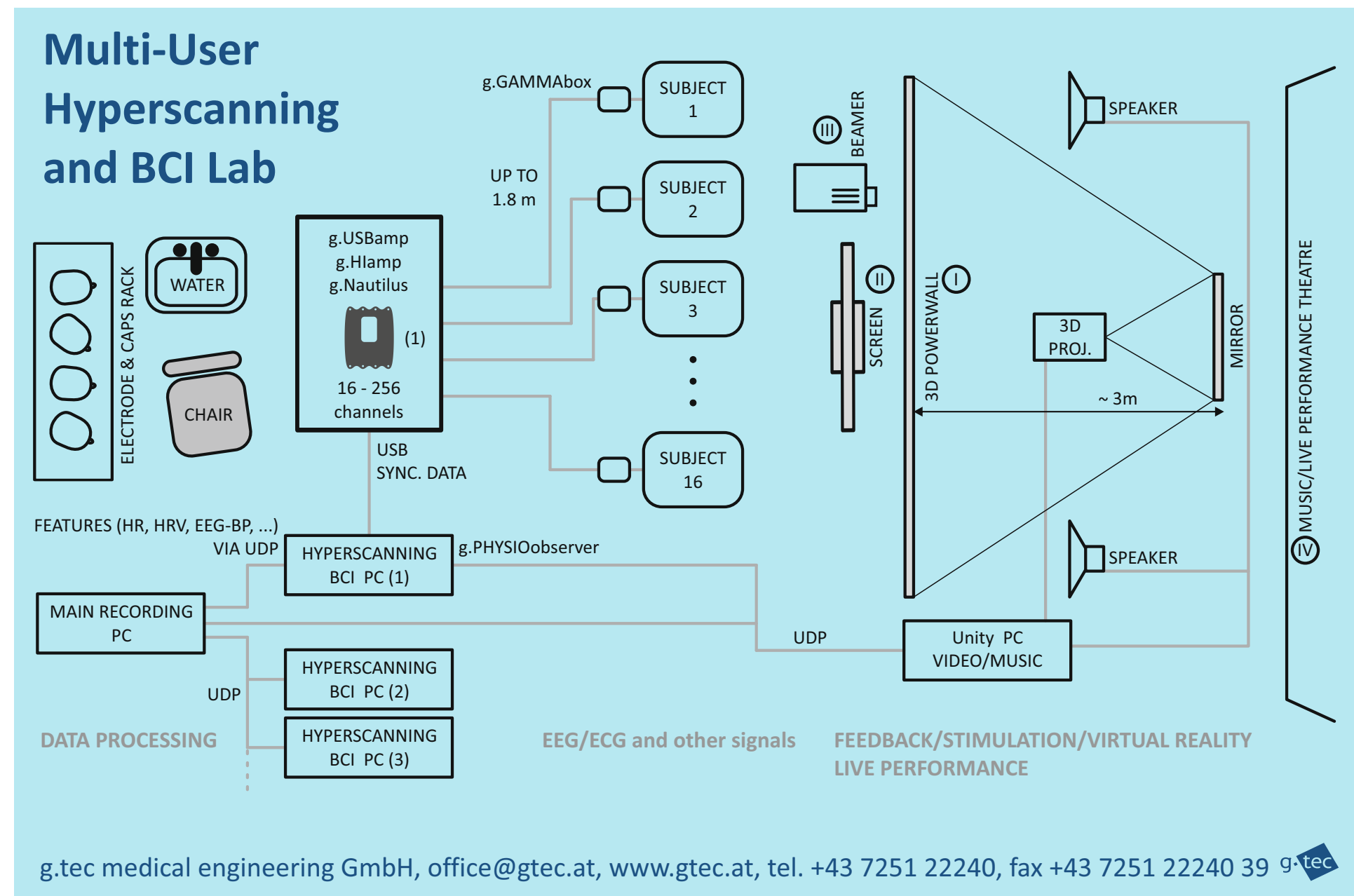
- g.Estim PRO cortical stimulator
- g.Estim FES electrical stimulator



g.TRIGbox



- g.STIMbox
- g.SSVEPbox



Software

- g.Recorder
  - g.BSanalyze
  - g.HIsys (Simulink)
  - g.HIsys (LabVIEW)
  - BCI2000
  - C/MATLAB/Linux API
  - g.RTanalyze
  - g.PHYSIOobserver
  - g.UDPinterface
  - Eyetracker interface
  - g.NEEDaccess
  - MULTI-DEVICE toolbox
  - g.Estim interface
  - distributed EEG
- Examples
- Hyperscanning
  - Motor imagery
  - SSVEP
  - CSP/RehaBCI
  - Vibro-tactile P300
  - Ping-Pong game
  - P300
  - Hybrid BCI
  - EMG/EOG control
  - CVEP
  - SOCI

- Training material
- EEG lecture
  - EP lecture
  - BCI lecture
  - ECG lecture
  - PhysioObserver lecture
  - g.Nautilus Sports lecture
- Request an offer for a complete lab for
- up to 4 subjects
  - up to 8 subjects
  - up to 16 subjects
  - up to .... subjects

**Check products of interest and request an offer per fax (+43 7251 22240 39) or e-mail (office@gtec.at) !**